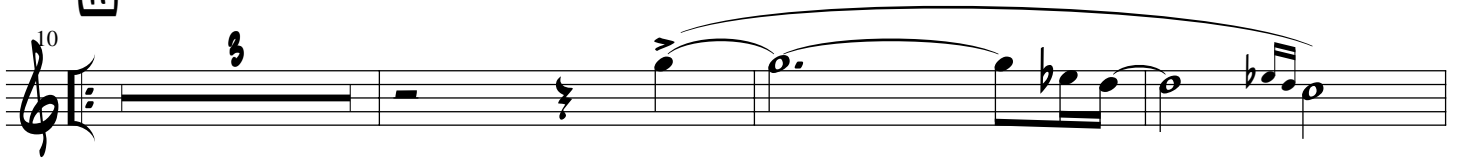


# I LIKE YOUR STYLE

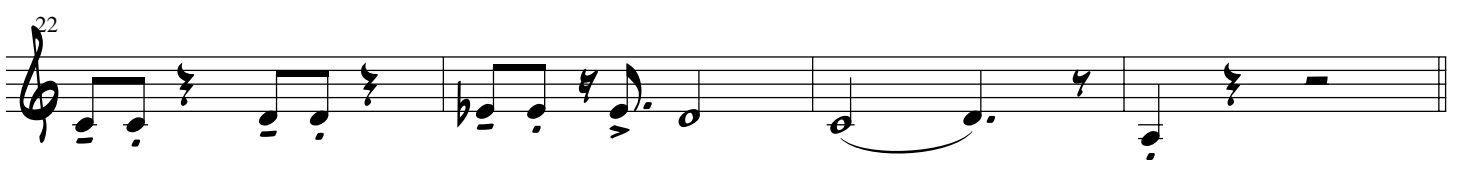
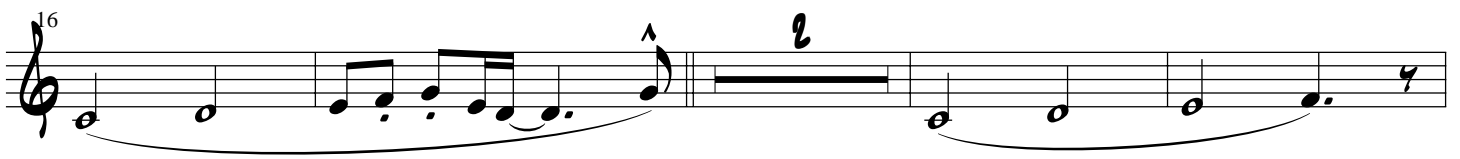
BARITONE



**A** VERSE



**B** VERSE



1. CHORUS



LOU CURALLI  
815-469-3812

34 2. CHORUS

38

**C** CHORUS

42

46

**D** QUIET SOLO

50

**E**

58

62

**F** VERSE

66

BARI

2

I LIKE...

Musical staff starting at measure 70. It features a melodic line with a long slur over the first four measures, followed by a quarter rest and a half rest.

**G** CHORUS

Musical staff starting at measure 74. It contains a rhythmic pattern of eighth notes and quarter notes with rests, and a triplet of eighth notes.

Musical staff starting at measure 78. It continues the rhythmic pattern from the previous staff.

**H** CHORUS

Musical staff starting at measure 82. It continues the rhythmic pattern from the previous staff.

Musical staff starting at measure 86. It continues the rhythmic pattern from the previous staff.

Musical staff starting at measure 90. It features a long slur over the first three measures, followed by a triplet of eighth notes and a quarter note. The staff ends with a double bar line and the word "FINE".