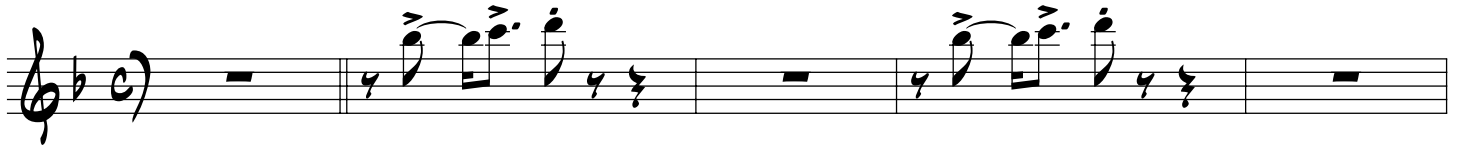
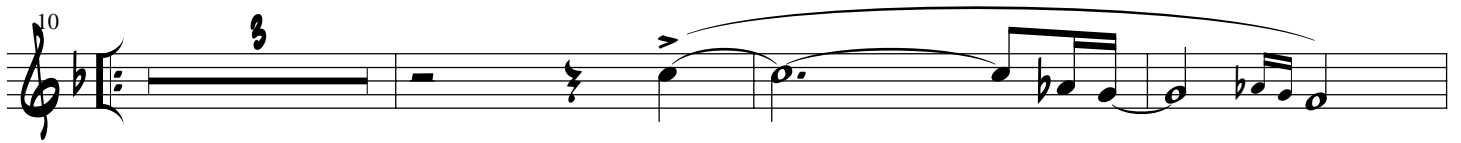


I LIKE YOUR STYLE

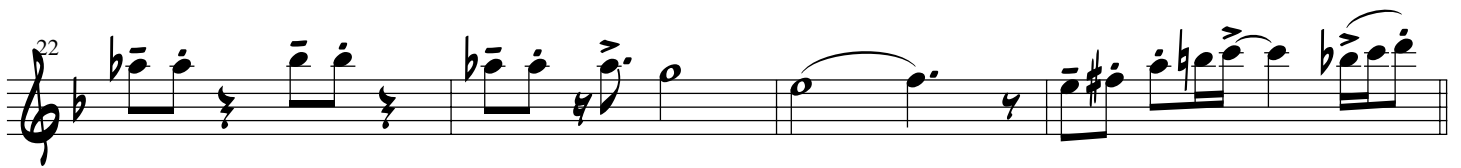
1ST TENOR



A VERSE



B VERSE



1. CHORUS



Musical staff starting at measure 70. It features a melodic line with a long slur over the first two measures, followed by eighth and sixteenth notes. The key signature has one flat.

G CHORUS

Musical staff starting at measure 74. It contains a rhythmic pattern of eighth notes with accents, followed by rests and eighth-note chords.

Musical staff starting at measure 78. It continues the rhythmic pattern from the previous staff.

H CHORUS

Musical staff starting at measure 82. It continues the rhythmic pattern from the previous staff.

Musical staff starting at measure 86. It continues the rhythmic pattern from the previous staff.

Musical staff starting at measure 90. It features a melodic line with a slur, followed by a triplet of eighth notes and a final eighth-note chord. The word "FINE" is written at the end. There are also some markings like "-3" and "-1" above the staff.