

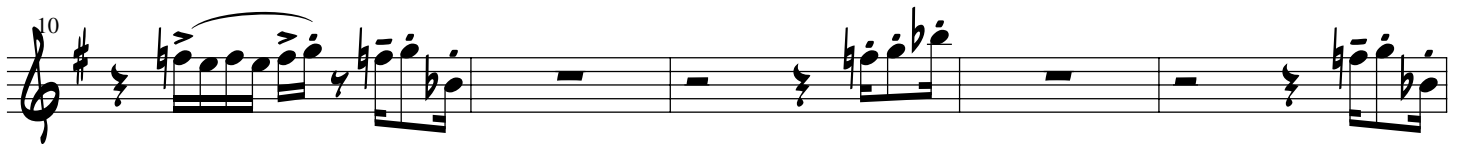
# PAGE ONE

## 1ST TRUMPET

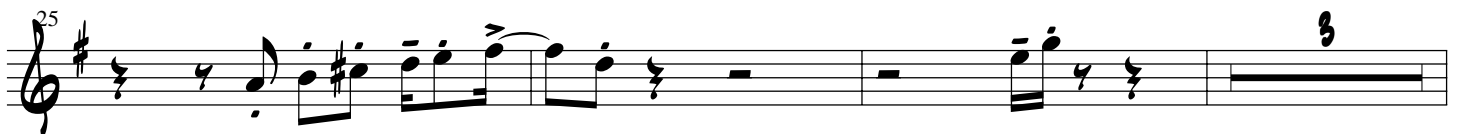


**A** CHORUS

3



**B** VERSE



ORGAN SOLO

36 2.

Musical staff starting at measure 36. It features a treble clef, a key signature of one sharp (F#), and a 4/4 time signature. The notation includes quarter notes, rests, and a triplet of eighth notes. A circled '2' is placed above the first measure, and a circled '3' is placed above the triplet.

42

Musical staff starting at measure 42. It features a treble clef, a key signature of one sharp (F#), and a 4/4 time signature. The notation includes quarter notes, rests, and a triplet of eighth notes. A circled '3' is placed above the first measure, and a circled '4' is placed above the final measure. A slur covers measures 46-49, with a dynamic marking of *mf* below the staff.

50

Musical staff starting at measure 50. It features a treble clef, a key signature of one sharp (F#), and a 4/4 time signature. The notation includes quarter notes, rests, and a triplet of eighth notes. A circled 'E' is placed below the first measure. A dynamic marking of *mf* is present, along with a hairpin crescendo symbol and a circled '4' above the staff.

54

Musical staff starting at measure 54. It features a treble clef, a key signature of one sharp (F#), and a 4/4 time signature. The notation includes quarter notes, rests, and a triplet of eighth notes.

58

Musical staff starting at measure 58. It features a treble clef, a key signature of one sharp (F#), and a 4/4 time signature. The notation includes quarter notes, rests, and a triplet of eighth notes.

62

Musical staff starting at measure 62. It features a treble clef, a key signature of one sharp (F#), and a 4/4 time signature. The notation includes quarter notes, rests, and a triplet of eighth notes. A circled 'F' is placed below the first measure.

66

Musical staff starting at measure 66. It features a treble clef, a key signature of one sharp (F#), and a 4/4 time signature. The notation includes quarter notes, rests, and a triplet of eighth notes. A circled 'D.S. AL CODA' is placed above the staff.

CODA

70

Musical staff starting at measure 70. It features a treble clef, a key signature of one sharp (F#), and a 4/4 time signature. The notation includes quarter notes, rests, and a triplet of eighth notes. A circled 'CODA' symbol is placed at the beginning of the staff.

G

75

79

H

83

87

I

91

95

J

99

103