

# YOU GOT TO FUNKIFIZE

## DRUMS

T.O.P.

Fill

Musical staff for drums. It begins with a 4/4 time signature and a key signature of one flat. The first measure contains a fill: a quarter note on the snare, followed by an eighth note on the snare and a quarter note on the bass drum. This is followed by a double bar line and the text "Funk Time". The rest of the staff consists of four measures of a steady eighth-note pattern on the snare.

A

Musical staff for drums. It begins with a key signature of one flat. The first three measures contain a steady eighth-note pattern on the snare. The fourth measure contains a quarter note on the snare, followed by an eighth note on the snare and a quarter note on the bass drum.

Musical staff for drums. It begins with a key signature of one flat. The entire staff consists of four measures of a steady eighth-note pattern on the snare.

Musical staff for drums. It begins with a key signature of one flat. The first three measures contain a steady eighth-note pattern on the snare, with accents (>) over the second and fourth notes of each measure. The fourth measure contains a quarter note on the snare, followed by an eighth note on the snare and a quarter note on the bass drum. This is followed by a double bar line and the text "Solo". The rest of the staff consists of four measures of a steady eighth-note pattern on the snare.

A1

Musical staff for drums. It begins with a key signature of one flat. The entire staff consists of four measures of a steady eighth-note pattern on the snare.

Musical staff for drums. It begins with a key signature of one flat. The entire staff consists of four measures of a steady eighth-note pattern on the snare.

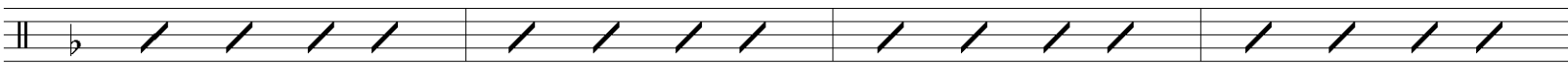
B

Musical staff for drums. It begins with a key signature of one flat. The entire staff consists of four measures of a steady eighth-note pattern on the snare.

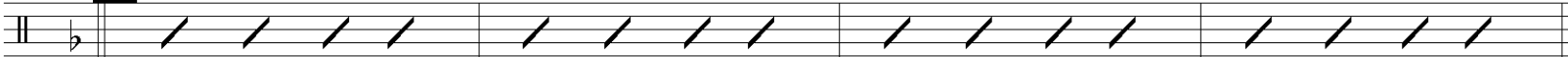
Musical staff for drums. It begins with a key signature of one flat. The entire staff consists of four measures of a steady eighth-note pattern on the snare.

B1

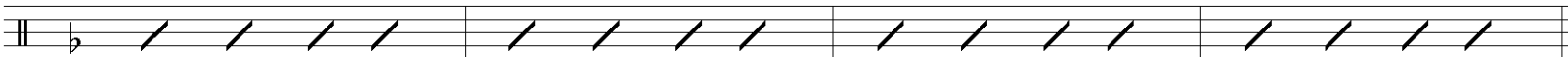
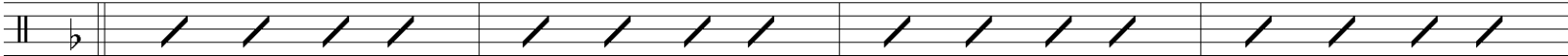
Musical staff for drums. It begins with a key signature of one flat. The entire staff consists of four measures of a steady eighth-note pattern on the snare.



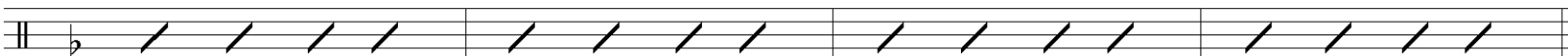
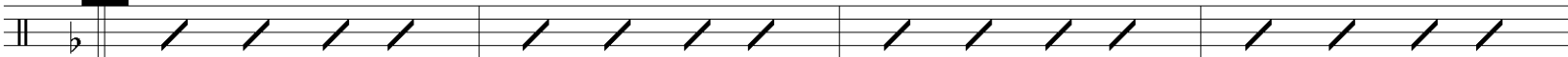
**C**



**C1**



**O**



**O1**



**E**

