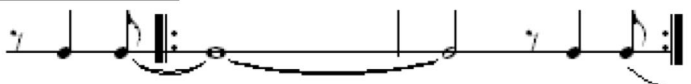


Chained To The Wheel

Transcribed by Aapo Wiksten

1st time with guitar and keys, 2nd time with band.



Intro

E/A | A | A // E/A | A | A // E/A | x2

Verse 1

Know what you really need, but you can't get enough
 Too many mouths to feed, well ain't life tough
 Call this survival, don't pray for a sign
 Know what you really want, you can't get it back
 Down on the waterfront, now watch out Jack
 Nights on the main line and rust on the rail

A | / | / | / |
 D | / | A | / |
 A | / | / | / |
 D | / | A | / |

Chorus 1

I see them swindle this town
 I've seen them tumblin' down
 I've seen red rivers, fire and steel
 I feel the thunder chained to the wheel

D G | / | / | / |
 Esus4 E | / | / | / |

Intro x1

Know what you mean to me, goes deeper than that
 Can't fight your destiny, know where it's at
 Don't look for lightning or pray for a sign

A | / | / | / |
 D | / | A | / |

Chorus 2

I see them swindle this town
 I've seen them tumblin' down
 I heard the legend, I watched the skies
 I feel the power, the flame in your eyes
 I've seen red rivers, fire and steel
 I feel the thunder chained to the wheel

D G | / | / | / |
 Esus4 E | / | / | / |
 / | / | / | / |

Instrumental break

Wheel, chained to the wheel,
 chained to the wheel

D | F | G | / | x2

Intro x1

Verse 1 only the first 8 bars

Chorus 3

I see them swindle this town
 I've seen them tumblin' down
 I've seen red rivers, fire and steel
 I feel the thunder chained to the wheel
 I heard the legend, I watched the skies
 I feel the power, the flame in your eyes
 I've seen red rivers, fire and steel
 I feel the thunder chained to the wheel

D G | / | / | / |
 Esus4 E | / | / | / |
 / | / | / | / |
 / | / | / | / |

Outro

D | F | G | / |

CHAINED TO THE WHEEL

VERSE 1

Know what you really need
You can't get enough
ETC ETC

VERSE 2

Know what you really want
You can't get it back
ETC ETC

CHORUS 1

I've seen 'em swindle this town
I've seen 'em tumble it down
I've seen red rivers, fire and steel
I've feel the thunder chained to the wheel

VERSE 3

Know what you mean to me
Goes deeper than that
ETC ETC

CHORUS 2

I've seen 'em swindle this town
I've seen 'em tumble it down
I've heard the legends
I've watched the skies
I feel the power
The flame in your eyes
I've seen red rivers, fire and steel
I've felt the thunder chained to the wheel
Chained to the Wheel , Chained to the Wheel

VERSE 1

CHORUS 3

I've seen 'em swindle this town
I've seen 'em tumble it down
I've seen red rivers, fire and steel
I've feel the thunder chained to the wheel
I've heard the legends
I've watched the skies
I feel the power
The flame in your eyes
I've seen red rivers, fire and steel
I've felt the thunder chained to the wheel

Trumpet in B \flat

chained to the wheel $\text{♩} = 118$

7 voice 8 8

26 3

33

38 8

50 8

62 2

68 8

80 12

94 chorus

98