

# Heartache Tonight

Transcribed by Aapo Wikstén

## Intro



## Verse

Guit, Keys & Voc!

Somebodys gonna hurt someone | Eb | Cm | Eb | Cm |  
Before the night is through | Eb | Ab | Eb | Bb |  
Somebodys gonna come undone. | Eb | Cm | Eb | Cm |  
Theres nothin we can do. | Eb | Cm | Eb | Cm |  
Everybody wants to touch somebody | Eb | Ab | Eb | Bb | /  
If it takes all night.  
Everybody wants to take a little chance,  
Make it come out right.

Band IN!

## Chorus

Theres gonna be a heartache tonight, | Ab7 | / | Eb | Bb7  
A heartache tonight, I know. | Ab7 | / | F7 | Bb7  
Theres gonna be a heartache tonight,  
I know, lord, I know.

## Verse 2

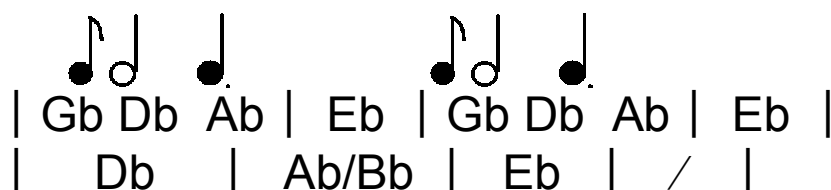
Some people like to stay out late | Eb | Cm | Eb | Cm |  
Some folks cant hold out that long | Eb | Ab | Eb | Bb | /  
But nobody wants to go home now. | Eb | Cm | Eb | Cm |  
Theres too much goin on. | Eb | Cm | Eb | Cm |  
This night is gonna last forever. | Eb | Ab | Eb | Bb7 | /  
Last all, last all summer long.  
Some time before the sun comes up  
The radio is gonna play that song.

## Chorus

## Chorus 2

Theres gonna be a heartache tonight, | Eb | Eb/G | Ab |  
The moons shinin bright | A° |  
So turn out the light, and well get it right. | Eb/Bb Cm | Gm Bb |  
Theres gonna be a heartache tonight, a |  
Heartache tonight I know. | Eb | / |  
Heartache baby,

## Interlude



**Verse 3**

Somebodys gonna hurt somebody,  
 Before the night is through  
 Somebodys gonna come undone,  
 Theres nothin we can do  
 Everybody wants to touch somebody  
 If it takes all night  
 Everybody wants to take a little chance  
 To make it come out right

Same chords as in verse 1

**Chorus****Chorus 3**

We can beat around the bushes;	Eb   Eb/G   Ab
We can get down to the bone	A°
We can leave it in the parkin lot,	Eb/Bb Cm   Gm Bb
But either way, theres gonna be a	A°   Abm7 Db9
Heartache tonight,	Eb Cm   Fm7 Bbsus47
a heartache tonight I know.	
Therell be a heartache tonight	
A heartache tonight I know.	

**Outro**

Gb Dbmaj76   Dbmaj76 Ab   Eb	