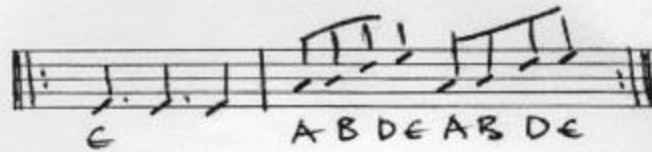


# PARANOID

INTRO



GUITAR 2X  
FULL BAND 2X

VERSE

Finished with my woman cause she couldnt help me with my mind  
People think Im insane because I am browning all the time

E | / | D | G D E || 2X (= RIF)

BRIDGE

E | C D | E | / || 2X

VERSE

All day long I think of things but nothing seems to satisfy  
Think Ill lose my mind if I dont find something to pacify

CHORUS

Can you help me thought you were my friend, Whoah yeah

E | / | D | /  
E | / | D | /

RIF 2X

VERSE

I need someone to show me the things in life that I cant find  
I cant see the things that make true happiness, I must be blind

RIF 4X GUITAR SOLO

RIF 2X BAND

VERSE

Make a joke and I will sigh and you will laugh and I will cry  
Happiness I cannot feel and love to me is so unreal

BRIDGE E | C D | E | / || 2X

VERSE

And so as you hear these words telling you now of my state  
I tell you to enjoy life I wish I could but its too late

RIF 2X END!

AW 14/8/08  
REV 24/8/08